

Verdermix static mixers

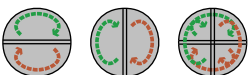


Verdermix static mixers are available in a wide range of executions and material options, thus providing a wide range of applications in numerous industries.

Working principle

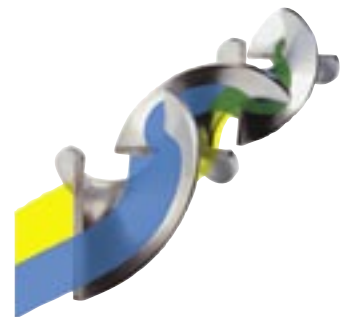
The static mixer uses the pump energy that is readily available in your process lines. Mixing is accomplished in two ways:

1. By flow division and rotation of the fluid streams. This feature is frequently used in laminar streams, where Reynolds < 2000



The mixers work by creating a rotational circulation around the hydraulic center of each element channel. This feature is present in both laminar and turbulent flow patterns.

The Verdermix static mixer is manufactured from a standard pipe or sanitary tube, in which a number of mixing elements have been mounted. These elements are welded together into a "chain".



Features and benefits

- Quick and intensive reaction between the mixable fluids and/or gases
- Compact unit; easy to install in a piping system
- Low energy consumption
- No moving parts
- Negligible maintenance costs
- Low investment

Models

■ VMV

This series represents the Verder standard and is readily and quickly available. The element chain is permanently fixed inside the tube.

■ VML

This is similar to the VMV series, however the VML element chain is mounted into the pipe in such a way that it can easily be removed for thorough and easy cleaning.

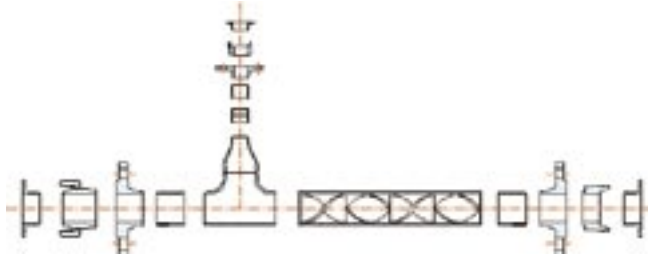
■ VMS

This is a mixer for processes in the food and pharmaceutical industries, where surfaces must be very smooth. Therefore, special attention is given to the smoothness of the welds - dead corners are avoided. In this design, the element chain is always retractable from the tube and specially designed thin-walled "sanitary" tubes are used.

■ VMD

All the mixing elements have been grinded to an exact diameter and are tightly assembled into the pipe. They are being assembled into the pipe by a tight fit. In doing so, there are no gaps between the elements and the pipe. This series is recommended for those cases where the viscosity of the main stream is far higher than the viscosity of the injected stream, but comprehensive mixing is nevertheless required. Soldering of the mixing elements to the pipe will also increase the heat transfer coefficient in heat exchanger applications.

Technical details



All Verdermix static mixers are custom made for your specification from a modular system. Technical details are available at the offer stage.

Options

- Also available as heat exchanger

Application areas

- Mixing of aromas
- Mixing of pigments
- General food applications
- Blending of liquid and gas streams
- Mixing catalyst
- Mixing polyelectrolyte in wastewater
- Adding "dopes" to products
- Food and pharmaceutical
- Hygienic applications
- Highly sterile processes
- CIP or SIP
- Higher viscosity ratios
- Mixing oxygen in water
- Mixing chemicals in water
- Mixing abrasive products like "cementiet"