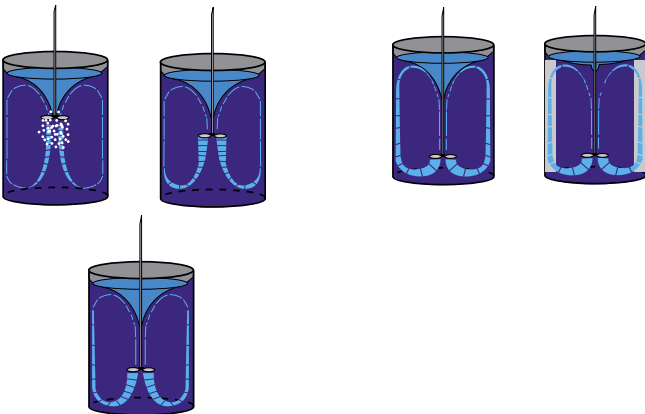


Verdermix dynamic mixers



Verdermix dynamix mixers are multi-purpose, multi-use mixers for general and specific applications in many industries including food and pharmaceuticals.

Working principle



The energy of the drive is transferred into the fluid by means of the mixing element which is located normally at the end of the mixer shaft. The energy is split into two components: pumping capacity and "shear" forces. The pump capacity enables the fluid to whirl, this is necessary for suspending, dispersing and gassing the medium.

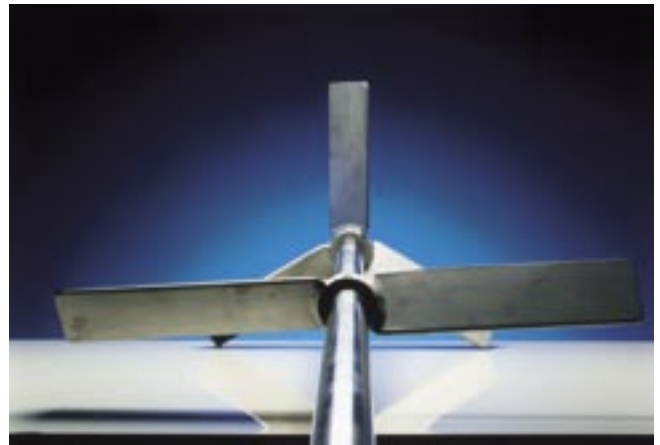
The shape of the mixing element(s), the position in the tank and the shaft speed create the end result.

Features and benefits

- Robust
- Stable
- Many parts delivered from stock
- Modular systems or assembled packages
- Easy assembly
- Simply modified for custom-made applications
- Suitable for every industrial application
- Effective low-cost packaging reduces the risk of damage during transport

Models

- VNF



The VNF model has shaft speeds between 750 and 1800 rpm and its electric motors, which are constructed to the IEC code, are to be used for light duty service. It can be fitted with shaft seals, lanterns with stuffing boxes, plastic linings or coatings against aggressive chemicals. Additional fixed or moving stands can be constructed to the customer's specifications and requirements.

■ VSM



Shaft speeds between 750 and 1800 rpm. This type of agitator uses a special electric motor with a hollow shaft. The robust mixer shaft is fixed with both a conical and cylindrical fit. The most notable characteristic of this heavy duty agitator is its robust and stable design.

■ VWM/VFG



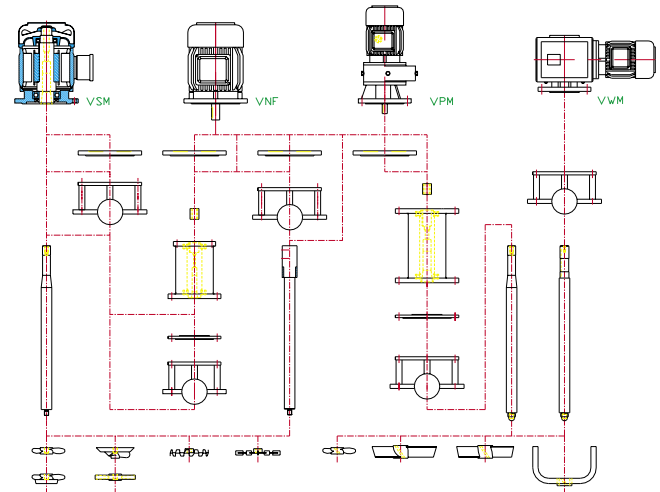
Shaft speeds between 30 and 200 rpm. Executed with a worm gear (VWM) or parallel shaft gear (VFG) and is excellent when mixable products require blending with great care and intensity. Large gearboxes also contain an extra step in gears, in order to reduce loads and to guarantee a long life span.

■ VPM

Shaft speeds between 120 and 1800 rpm. This type of agitator is driven through a gearbox. The driver can be equipped with an internal frequency control and can be operated by a simple potentiometer on the e-motor or a small panel at a set distance from the unit.

Technical specifications

	Shaft speeds (rpm)	Drive
VNF	750 - 1800	electric IEC
VSM	750 - 1800	electric (hollow shaft)
VWM/VFG	30 - 200	worm gear / parallel shaft gear
VPM	120 - 1800	gearbox



Dynamic mixers according to modular system

Application areas

- Neutralisation in wastewater plants
- Coagulation in wastewater plants
- Homogenisation of low viscous fluids
- Wastewater treatment
- Confectionery industry for continuous operation at high speeds in hot and viscous cacao mixtures
- Mixing fluids of higher viscosity
- Flocculation treatment of wastewater
- Reactor vessels
- Suspension of solids in liquids
- Blending more viscous liquids
- In processes where the viscosity will change significantly during mixing (thixotrope or pseudoplastic processes)